

Stainless steel anti-slip treads



PORCHER
Abrasive Coatings Ltd

www.porcher.co.uk



TreadSafe®

stainless steel floor treads

the permanent anti-slip solution for hazardous areas

Probably the most robust anti-slip available, TreadSafe® is designed to withstand high volume pedestrian traffic and extremes of temperature. The range offers a permanent, rugged solution to slips, trips and falls in industrial, food, offshore and public access areas.

■ Will withstand abrasion, impact and chemical spillage, whilst being slip-resistant even when impregnated with water, oils, grease, acids, alkalis, and salts.

■ Designed specifically for use on floors, stairs, ramps, walkways, and external fire escapes in standard and bespoke sizes.

■ Highlighted leading edge available to meet the requirements of the Disability Discrimination Act.

■ Supplied pre-drilled and countersunk for quick and easy fixing to chequer plate, metal grills, concrete and wood, ensuring minimum downtime and disruption to traffic.

■ Available in coarse to fine grit profiles and standard colour choices of black, grey or yellow.

■ All the TreadSafe® range meets the following requirements:-

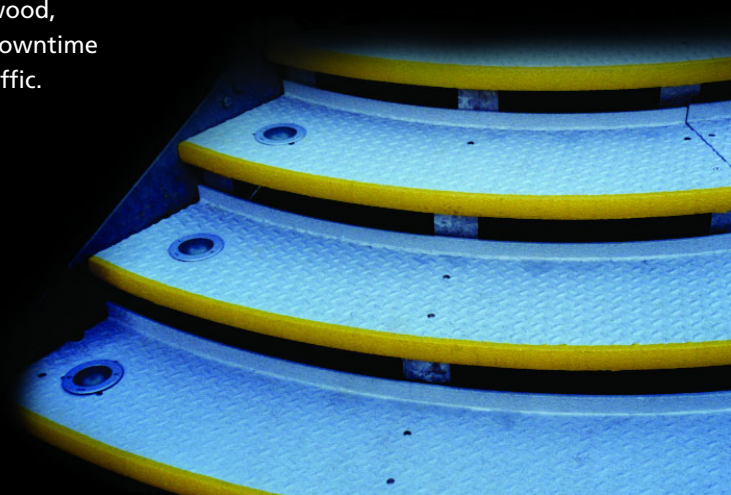
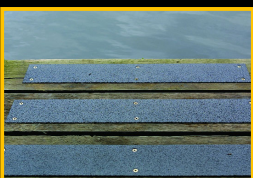
- Class 2 fire resistant to BS476 Part 7

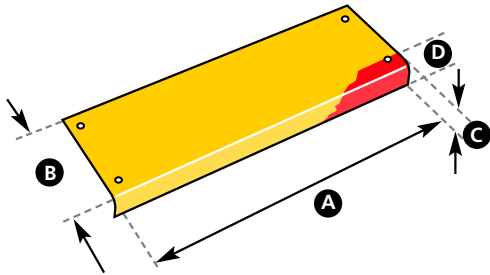
- U.V. resistant

- Food quality top coat approved for food contact

- Graffiti, mould and fungus resistant

■ Options include marine grade stainless steel, a variety of colour choices and coating of customers' free issue material.





How to measure and specify:

Treads:

A (Width): A gap of 50 – 75mm at each side of the step can be left when measuring. This allows for any discrepancies and helps reduce costs.

B (Depth): The minimum depth should be at least 50mm. However, it is advisable to cover as much of the step as practicable.

C (Nosing): A standard 20mm nosing is recommended for safety reasons on all step edgings.

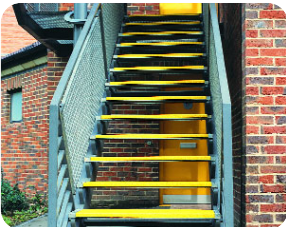
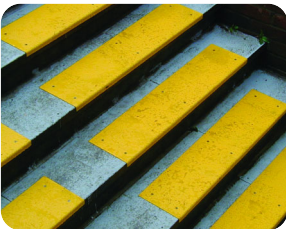
D (Highlighted Nosing and Leading Edge)

Decking and cleats:

Decking (1.5mm stainless steel) and cleats (0.7mm stainless steel) are suitable for walkways and ramps. Measure A and B as above.

Ladder-rung covers:

1. Measure diameter of ladder-rung.
2. Measure length of ladder-rung allowing a small gap between the stringers for ease of fitting.



Material (Standard)

Base plate:
1.5mm stainless steel grade 304

Abrasive:
Aluminium oxide

Top coat:
A high performance polymeric system specifically developed to offer outstanding weather, abrasion, chemical and graffiti resistance which is also totally unaffected by extreme levels of ultra-violet light.

CFR 21.175.300 requirements for food contact.

Fire Resistance:
Class 2 fire resistant to BS476 Part 7

Chemical Resistance:
10% Hydrochloric Acid
10% Phosphoric Acid
10% Sulphuric Acid
Ammonia solution
Kerosene
Mineral oils
Petrol fuel oils
All standard industrial cleaners when used in accordance with the manufacturers' specification.

RAL Colour Codes:
Black: 9005 (nearest match)
Mid Grey: 00 A 09
Yellow: 08 E 51

Cleaning:
Wash with a hot/cold water pressure washer with mild cleaning fluid.

CONTACT US

Porcher Abrasive Coatings Ltd.,
Nursery Road,
Riverside Industrial Estate,
Boston,
Lincolnshire PE21 7TN,
England

Telephone: +44 (0)1205 356666

Fax: +44 (0)1205 351646

e-mail: info@porcher.co.uk

Website: www.porcher.co.uk

Technical Specification

The TreadSafe® range meets the following specifications:

Food Contact:
Top coat meets USDA requirements for incidental food contact and FDA